

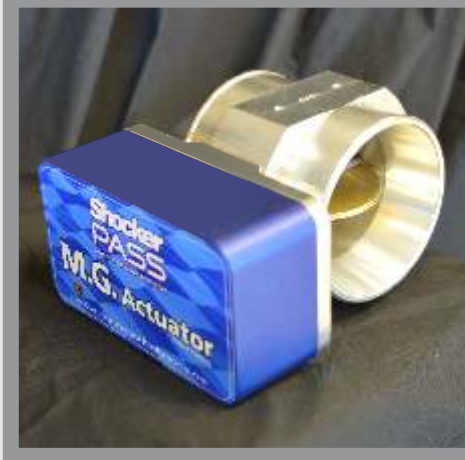
# Shocker PASS<sup>®</sup>

POSITIVE AIR SHUTOFF SYSTEM

## SHOCKER POSITIVE AIR SHUTOFF SYSTEMS Auto Reset MG Series

### WHY CHOOSE OUR VALVE?

- Simplicity at its Finest
- Only One Moving Part
- No external moving parts
- Patent Pending
- 5 amp 12 volt or 2.5 amp 24 volt draw
- No Plastic Gears or Electric Motors
- Solid Billet Aluminum Components for Superior Strength and Durability
- Corrosion resistant coatings and stainless steel fasteners
- Over 80,000 Continuous Test Cycles
- Solid state weather resistant Electronic Controller
- Plug & Play Harness
- Stringent Quality Control - each unit is hand tested
- Ten million dollar (CAD) liability insurance



### AUTO RESET SYSTEM

- RPM controlled overspeed activation
- Automatic valve re-opening
- Activation source
  - CAN J1939 message
  - Engine pulse (mag sensor)
  - Generator end pick-up
  - OBDII
- In hose style, 4" and up

### OPTIONS

- 12V and 24V activation
- Insta-bead
- Multiple speed sensors



### IN-HOUSE DEPARTMENTS

- Research and Development
- 3D CAD Design
- 3D Printing
- Graphics Printing
- Machine Shop
- Technical Support

**AMERICAN DISTRIBUTION CENTER LOCATED IN HASTINGS NEBRASKA**

**Manufactured by:**  
Headwind Solutions Ltd.  
4331 - 41 Street  
Camrose, Alberta, Canada  
T4V 3V8



# Headwind Solutions Ltd.

**www.headwindsolutions.ca**  
sales@headwindsolutions.ca  
Office: 1.780.672.2775  
Toll Free: 1.844.304.7277 (PASS)  
Fax: 1.780.672.6411

**MADE IN NORTH AMERICA**

**TWO YEAR PARTS WARRANTY**